

SITE PLAN
SCALE: NTS



830 N. SUMMIT STREET
TOLEDO, OHIO 43604
419.243.2400 P | 419.243.2405 F

	ORIGINAL CONSTRUCTION 1922 AREA: 99,768 SF
	AUDITORIUM FIXED SEATING 1922 AREA: 2,710 SF
	CAREER TECH ADDITION 1927 AREA: 6,299 SF
	MECH ROOM ADDITION 1949 AREA: 2,836 SF
	CLASSROOM ADDITION 1960 AREA: 150,780 SF
	AUDITORIUM FIXED SEATING 1960 AREA: 12,395 SF
	BOARD OFFICES 1960 AREA: 4,545 SF
	CAREER TECH ADDITION 1969 AREA: 25,143 SF

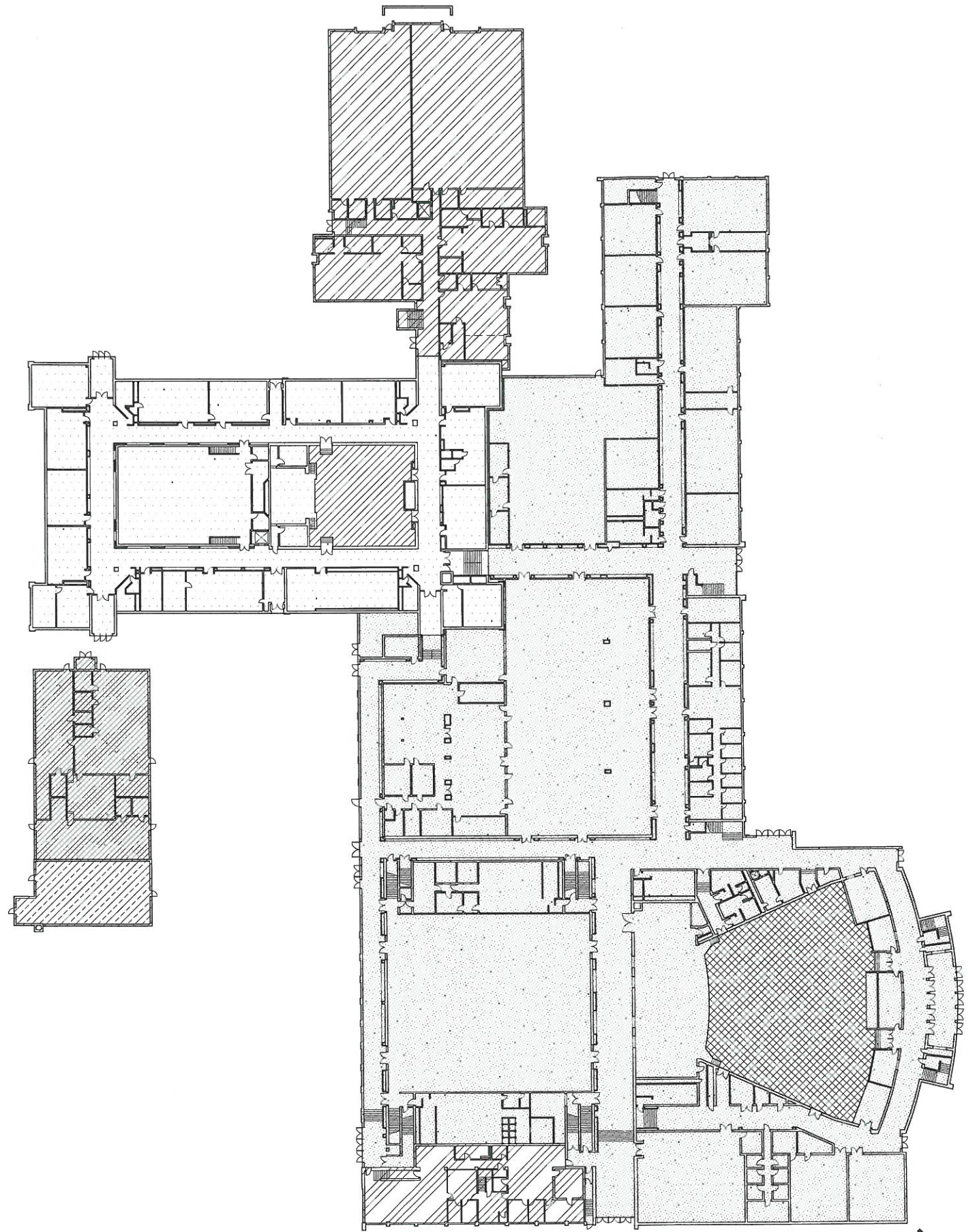
CUYAHOGA FALLS HIGH SCHOOL

CUYAHOGA FALLS LOCAL SCHOOLS
OHIO SCHOOLS FACILITY COMMISSION

ASSESSMENT DATE: JULY 2009	CONSTRUCTION DATES: 1922, 1922 1927, 1949, 1960, 1960, 1969
GRADE CONFIGURATION: 9-12	EXISTING BUILDING AREA: 304,476 SF
CURRENT ENROLLMENT: 1,662	SQUARE FOOTAGE PER STUDENT: 183.20
ACREAGE: 9.9	

SHEET NUMBER

1 OF 6



ADDITION LAYOUT PLAN
SCALE: 1" = 70'-0"

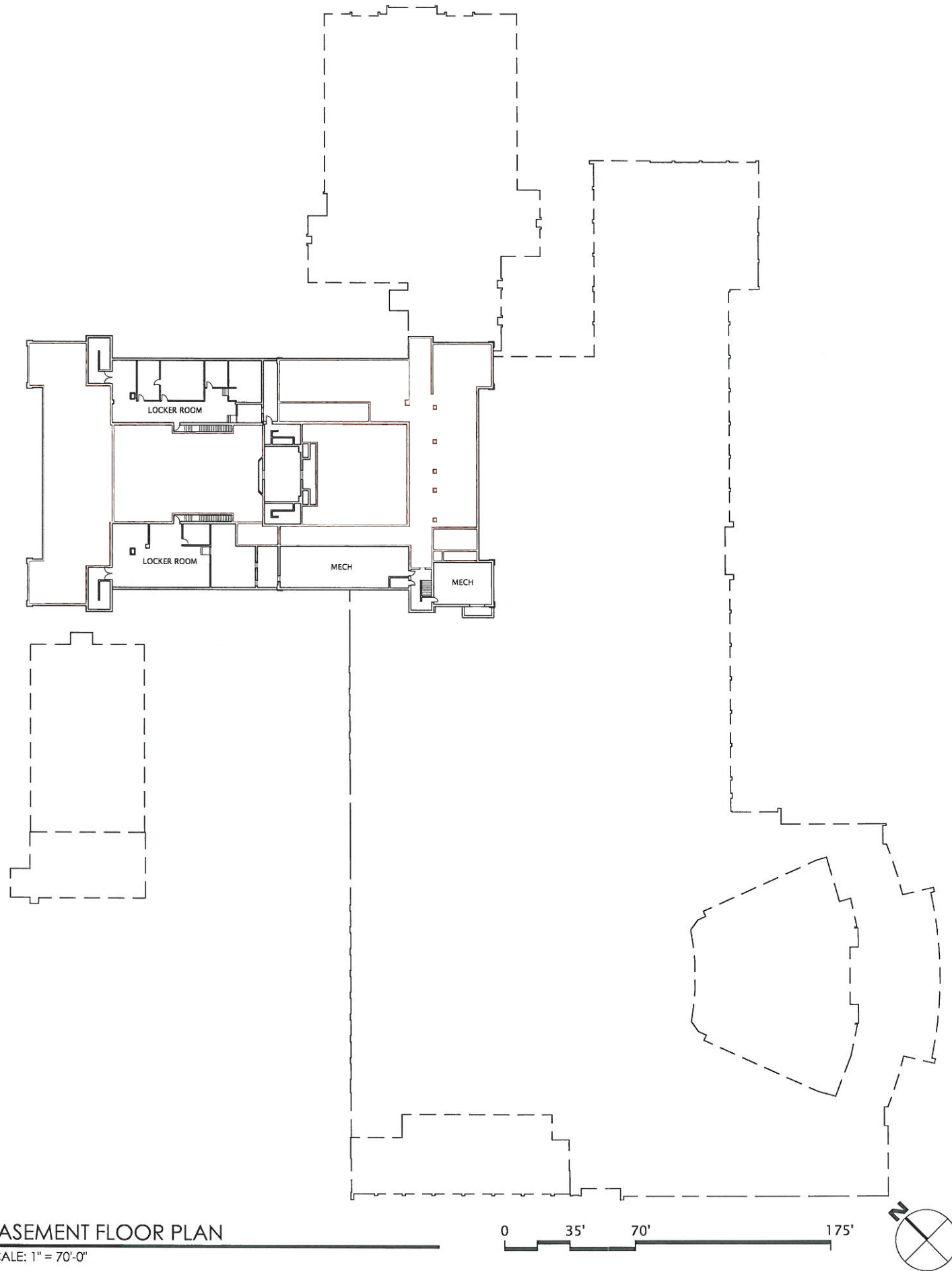
0 35' 70' 175'



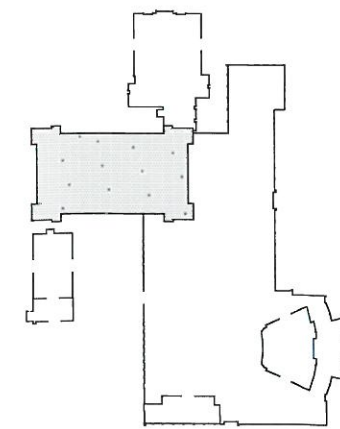
- ORIGINAL CONSTRUCTION
1922 AREA: 99,768 SF
- ▨ AUDITORIUM FIXED SEATING
1922 AREA: 2,710 SF
- ▩ CAREER TECH ADDITION
1927 AREA: 6,299 SF
- ▧ MECH ROOM ADDITION
1949 AREA: 2,836 SF
- ▤ CLASSROOM ADDITION
1960 AREA: 150,780 SF
- ⊠ AUDITORIUM FIXED SEATING
1960 AREA: 12,395 SF
- ▨ BOARD OFFICES
1960 AREA: 4,545 SF
- ▩ CAREER TECH ADDITION
1969 AREA: 25,143 SF

CUYAHOGA FALLS HIGH SCHOOL
CUYAHOGA FALLS LOCAL SCHOOLS
OHIO SCHOOLS FACILITY COMMISSION

ASSESSMENT DATE: JULY 2009	CONSTRUCTION DATES: 1922, 1922 1927, 1949, 1960, 1960, 1960, 1969
GRADE CONFIGURATION: 9-12	EXISTING BUILDING AREA: 304,476 SF
CURRENT ENROLLMENT: 1662	SQUARE FOOTAGE PER STUDENT: 183.20
ACREAGE: 9.9	



BASEMENT FLOOR PLAN
SCALE: 1" = 70'-0"

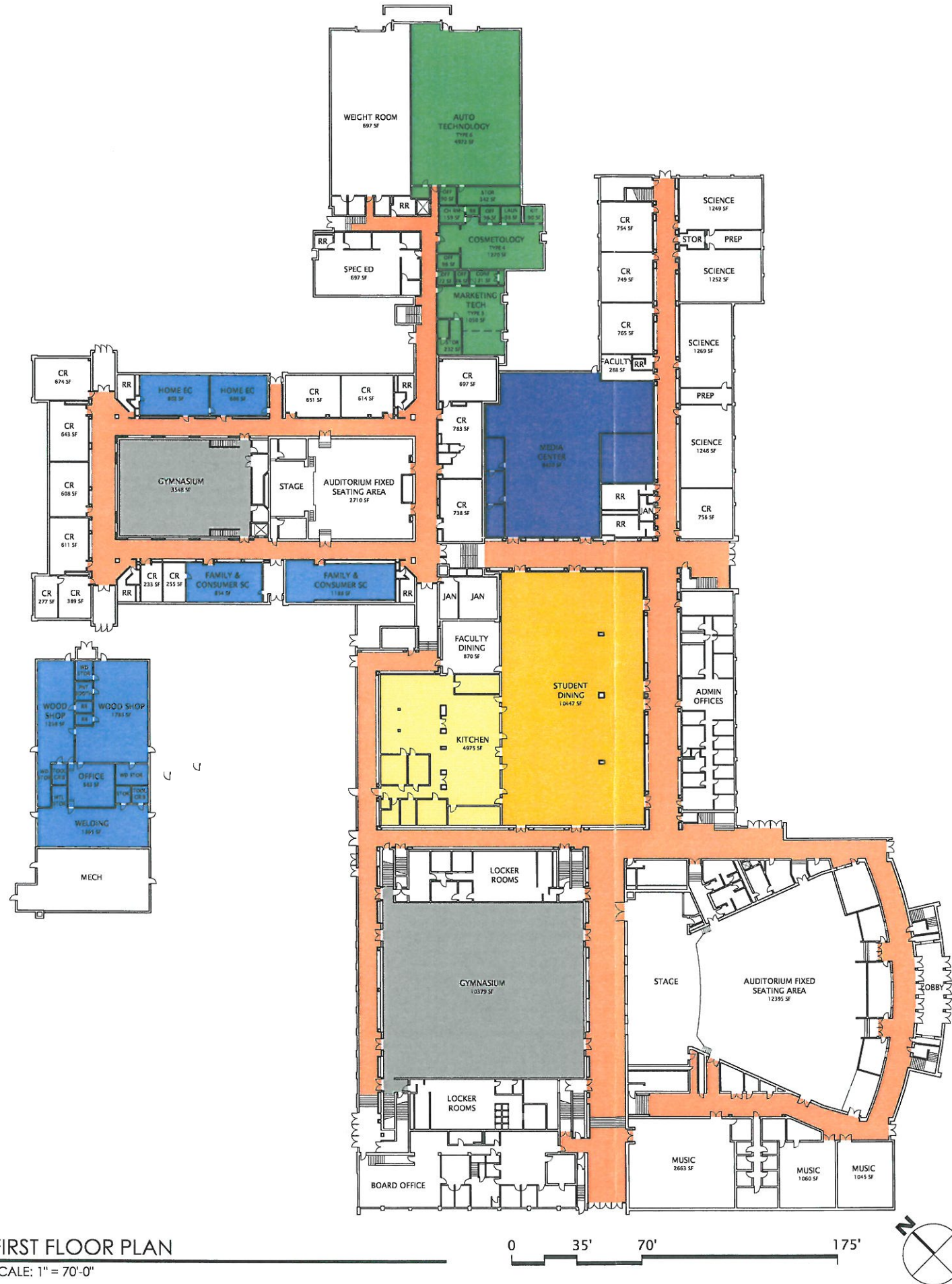


KEY PLAN
NTS

	ORIGINAL CONSTRUCTION 1922 AREA: 99,768 SF
	AUDITORIUM FIXED SEATING 1922 AREA: 2,710 SF
	CAREER TECH ADDITION 1927 AREA: 6,299 SF
	MECH ROOM ADDITION 1949 AREA: 2,836 SF
	CLASSROOM ADDITION 1960 AREA: 150,780 SF
	AUDITORIUM FIXED SEATING 1960 AREA: 12,395 SF
	BOARD OFFICES 1960 AREA: 4,545 SF
	CAREER TECH ADDITION 1969 AREA: 25,143 SF

CUYAHOGA FALLS HIGH SCHOOL
CUYAHOGA FALLS LOCAL SCHOOLS
OHIO SCHOOLS FACILITY COMMISSION

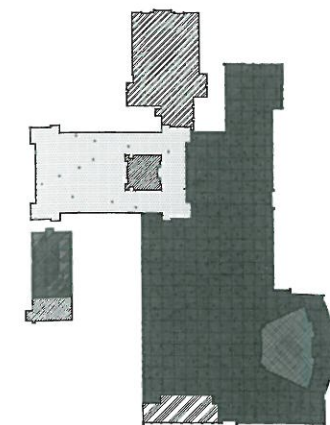
ASSESSMENT DATE: JULY 2009	CONSTRUCTION DATES: 1922, 1922 1927, 1949, 1960, 1960, 1960, 1969
GRADE CONFIGURATION: 9-12	EXISTING BUILDING AREA: 304,476 SF
CURRENT ENROLLMENT: 1,662	SQUARE FOOTAGE PER STUDENT: 183.20
ACREAGE: 9.9	



FIRST FLOOR PLAN
SCALE: 1" = 70'-0"

- CORRIDORS
- GYMNASIUM
- KITCHEN
- STUDENT DINING
- MEDIA CENTER
- CAREER TECH
- VOCATIONAL
- UNUSABLE

- ORIGINAL CONSTRUCTION 1922 AREA: 99,768 SF
- AUDITORIUM FIXED SEATING 1922 AREA: 2,710 SF
- CAREER TECH ADDITION 1927 AREA: 6,299 SF
- MECH ROOM ADDITION 1949 AREA: 2,836 SF
- CLASSROOM ADDITION 1960 AREA: 150,780 SF
- AUDITORIUM FIXED SEATING 1960 AREA: 12,395 SF
- BOARD OFFICES 1960 AREA: 4,545 SF
- CAREER TECH ADDITION 1969 AREA: 25,143 SF














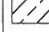


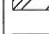
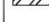
KEY PLAN
NTS

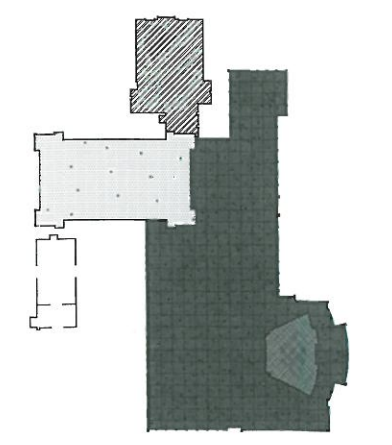
CUYAHOGA FALLS HIGH SCHOOL
CUYAHOGA FALLS LOCAL SCHOOLS
OHIO SCHOOLS FACILITY COMMISSION

ASSESSMENT DATE: JULY 2009	CONSTRUCTION DATES: 1922, 1922, 1927, 1949, 1960, 1960, 1960, 1969
GRADE CONFIGURATION: 9-12	EXISTING BUILDING AREA: 304,476 SF
CURRENT ENROLLMENT: 1662	SQUARE FOOTAGE PER STUDENT: 183.20
ACREAGE: 9.9	



SECOND FLOOR PLAN
SCALE: 1" = 70'-0"

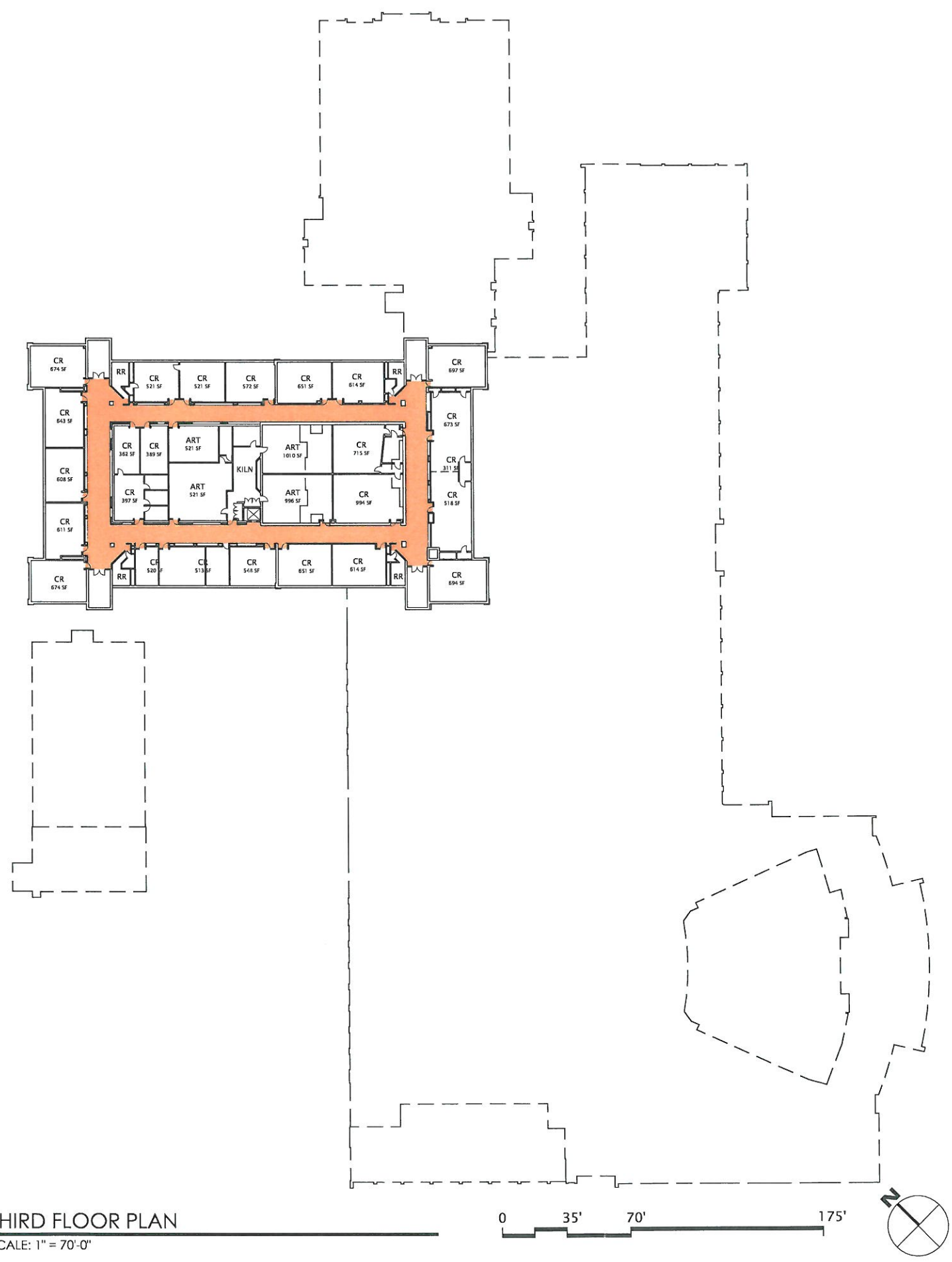
-  CORRIDORS
 -  GYMNASIUM
 -  KITCHEN
 -  STUDENT DINING
 -  MEDIA CENTER
 -  CAREER TECH
 -  VOCATIONAL
 -  UNUSABLE
-  ORIGINAL CONSTRUCTION
1922 AREA: 99,768 SF
 -  AUDITORIUM FIXED SEATING
1922 AREA: 2,710 SF
 -  CAREER TECH ADDITION
1927 AREA: 6,299 SF
 -  MECH ROOM ADDITION
1949 AREA: 2,836 SF
 -  CLASSROOM ADDITION
1960 AREA: 150,780 SF
 -  AUDITORIUM FIXED SEATING
1960 AREA: 12,395 SF
 -  BOARD OFFICES
1960 AREA: 4,545 SF
 -  CAREER TECH ADDITION
1969 AREA: 25,143 SF



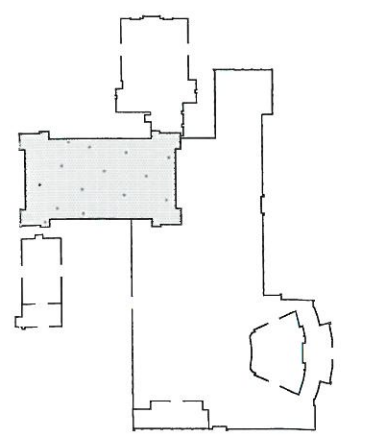
KEY PLAN
NTS

CUYAHOGA FALLS HIGH SCHOOL
CUYAHOGA FALLS LOCAL SCHOOLS
OHIO SCHOOLS FACILITY COMMISSION








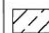








ASSESSMENT DATE: JULY 2009	CONSTRUCTION DATES: 1922, 1922 1927, 1949, 1960, 1960, 1960, 1969
GRADE CONFIGURATION: 9-12	EXISTING BUILDING AREA: 304,476 SF
CURRENT ENROLLMENT: 1,662	SQUARE FOOTAGE PER STUDENT: 183.20
ACREAGE: 9.9	



THIRD FLOOR PLAN
SCALE: 1" = 70'-0"



KEY PLAN
NTS

	CORRIDORS		ORIGINAL CONSTRUCTION 1922 AREA: 99,768 SF
	GYMNASIUM		AUDITORIUM FIXED SEATING 1922 AREA: 2,710 SF
	KITCHEN		CAREER TECH ADDITION 1927 AREA: 6,299 SF
	STUDENT DINING		MECH ROOM ADDITION 1949 AREA: 2,836 SF
	MEDIA CENTER		CLASSROOM ADDITION 1960 AREA: 150,780 SF
	CAREER TECH		AUDITORIUM FIXED SEATING 1960 AREA: 12,395 SF
	VOCATIONAL		BOARD OFFICES 1960 AREA: 4,545 SF
	UNUSABLE		CAREER TECH ADDITION 1969 AREA: 25,143 SF

CUYAHOGA FALLS HIGH SCHOOL
CUYAHOGA FALLS LOCAL SCHOOLS
OHIO SCHOOLS FACILITY COMMISSION

ASSESSMENT DATE: JULY 2009	CONSTRUCTION DATES: 1922, 1922 1927, 1949, 1960, 1960, 1969
GRADE CONFIGURATION: 9-12	EXISTING BUILDING AREA: 304,476 SF
CURRENT ENROLLMENT: 1,662	SQUARE FOOTAGE PER STUDENT: 183.20
ACREAGE: 9.9	